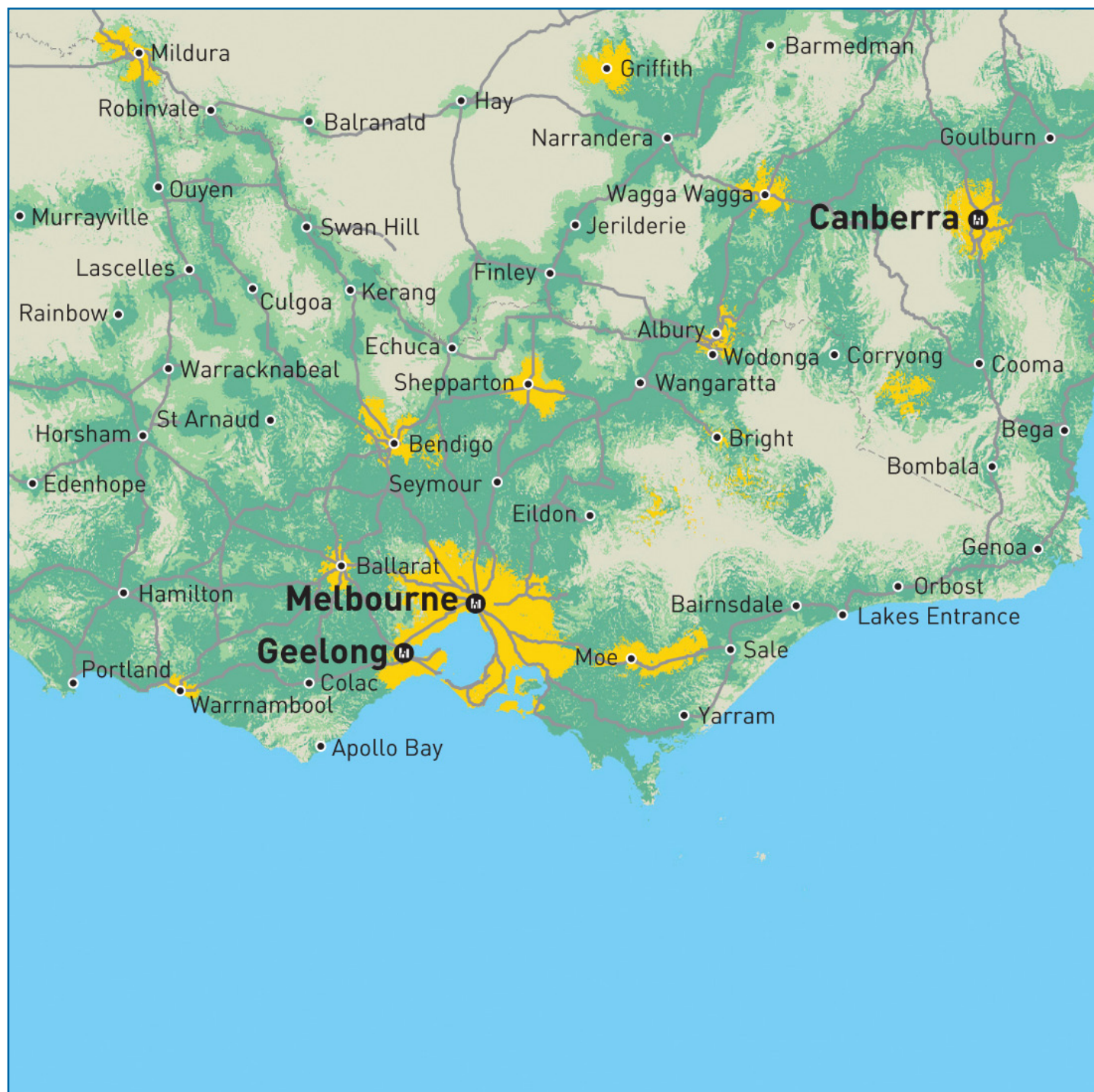


3G 2100MHz/2G Coverage Map



3G Coverage (2100MHz)*

3G Mobile Voice
HSDPA Data
Mobile Broadband

2G On-Street Coverage*

GSM Mobile (2G)
GPRS Data

2G In-Vehicle Coverage*

GSM Mobile (2G)

*Coverage is dependant on a 3G 2100MHz device.

Visit www.acnpacific.com.au/3G to view a range of 3G handsets for use in 2100MHz locations.

Outside 3G 2100MHz areas, you will require a device capable of accessing GSM 900MHz.

Handset quality or local conditions may prevent or interfere with mobile reception within coverage areas e.g. inside concrete buildings, lift wells, basements, tunnels and road cuttings. High rise buildings may also suffer degradation of service. These maps are not an indication of in-building coverage.